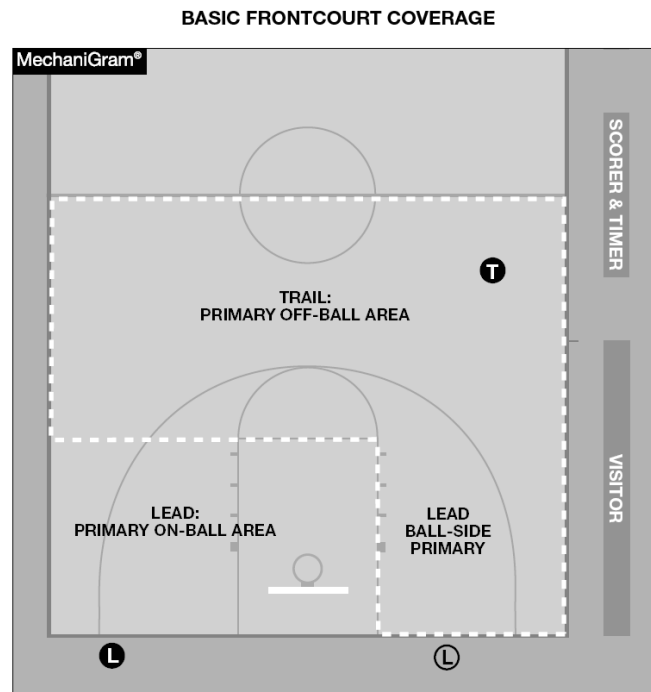


TWO-PERSON MECHANICS

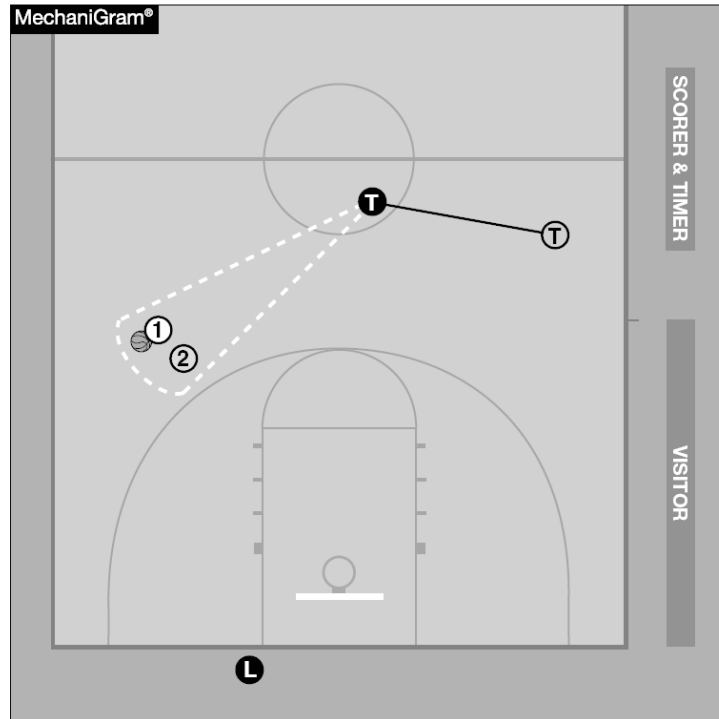
There may be times when one official is unable to work, it will be necessary for two officials to work the game. The following are some differences regarding the two-person mechanics from our three-person mechanics:



The trail:

- Will maintain a position to the side and behind the ball except when the ball is too near the sideline in which case they will position adjust to the opposite side of the ball. The trail could be on either side of the playing court.
- Is responsible for on-ball coverage whenever it is above the free-throw line extended, including the backcourt in transition, and below the free-throw line when the ball is between the near free-throw lane line and the three-point line (unless the lead crosses the lane to officiate on ball) or between the three-point line and the trail's sideline.
- Is responsible for off-ball coverage whenever the ball is accepted by the lead at or below the free-throw line extended between the trail-side free throw-lane line and the three-point line. They may have to position adjust towards center court to have an open look at weakside action areas while maintaining a view of all off-ball areas.

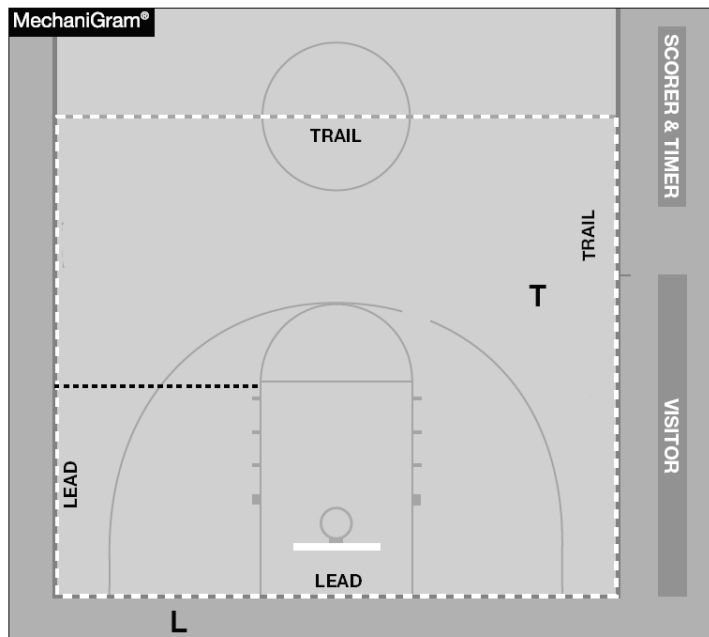
MOVEMENT OFF SIDELINE



The lead:

- Will transition up court on the side of the floor opposite the trail official.
- Is responsible for on-ball coverage when it is at or below the free-throw line extended between the trail-side free-throw lane line and three-point line.
- Is responsible for off-ball coverage whenever the ball is above the free-throw line extended or is below the free-throw line extended between the free-throw lane line and sideline on the trail's side of the playing court. This includes strongside and weakside.
- Is responsible for out-of-bounds on the end line and sideline on their side of the playing court.

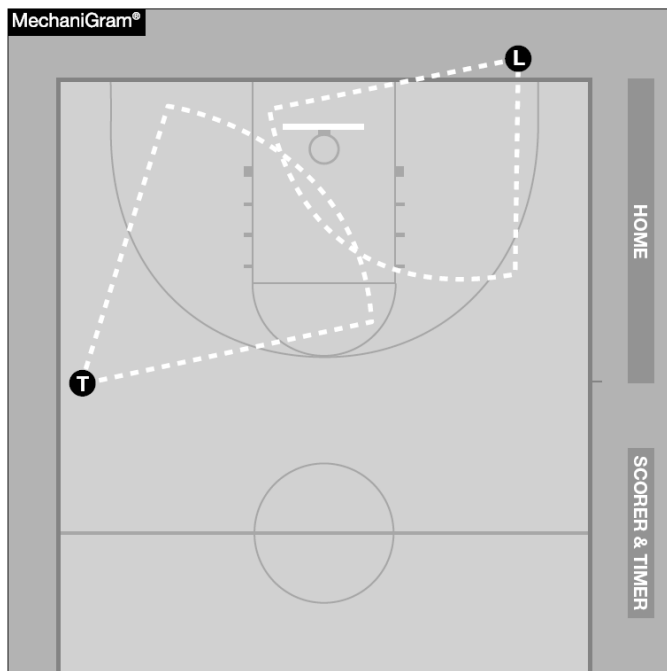
HALFCOURT BOUNDARY LINE



REBOUNDING COVERAGE:

- The trail is responsible for perimeter and weakside rebounding.
- The lead is responsible for strongside rebounding.

REBOUNDING AREAS



FREE-THROW COVERAGE:

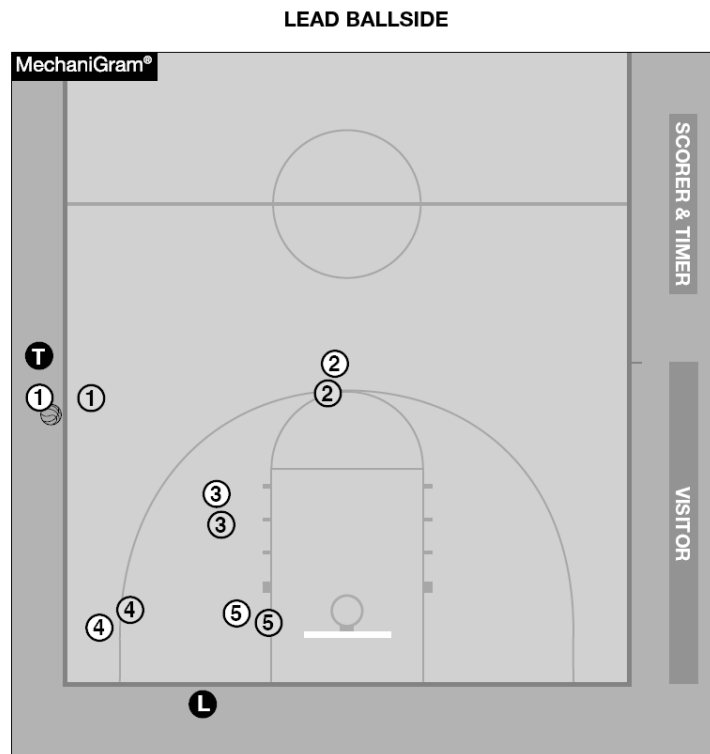
- During free throw attempts, the trail will always be opposite the scorers’ table. The trail is responsible for the free-throw shooter, all players not on the lane line and violations on the opposite lane line.
- During free throws, the lead will be positioned outside the end line opposite the trail official (always tableside) and is responsible for violations on the opposite lane line.

LAST-SECOND FIELD-GOAL ATTEMPTS:

- The trail is responsible for last second field-goal attempts on all plays regardless of time and plays that begin in the backcourt with 3.0 seconds or less for all backcourt attempts.
- The lead is responsible for last second field-goal attempts in the frontcourt on all plays that begin in the backcourt with 3.0 seconds or less on the game clock.

ROTATIONS/SWITCHES:

- There are no live-ball rotations. Officials switch on all fouls except for long switches (offensive foul committed in the offending team’s frontcourt or a rebounding foul by the shooting team prior to the bonus being in effect).



Additional resources are available from Referee Magazine or IAABO.

MechaniGrams® used with permission of Referee Enterprises.